

## **Introduction**

### ► Feature

- Line pull: 9,000 lb wire rope first layer
- Synthetic rope: 10mm × 30.5m synthetic rope SK75
- Brake: Full Load Holding Proprietary Cone Brake
- Clutch: Lift and turn T Bar to activate free spool
- Control: Handheld pendant switch

### ► Unpacking

- Winch assembly..... 1 pc
- Control box..... 1 pc
- Remote control..... 1 pc
- Synthetic rope with clevis hook..... 1 pc
- Hawse fairlead..... 1 pc
- 6' 2 gauge battery lead..... 1 pc

### ► Read this manual carefully

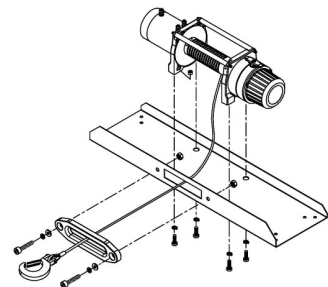
Carefully read and understand this manual before operating the winch. Careless winch operation may result in personal injury, danger to others and or damage to property

## **Installation**

Before using the winch ensure all electrical components are in good condition and all connections are sound.

### ► Winch and Hawse fairlead mounting

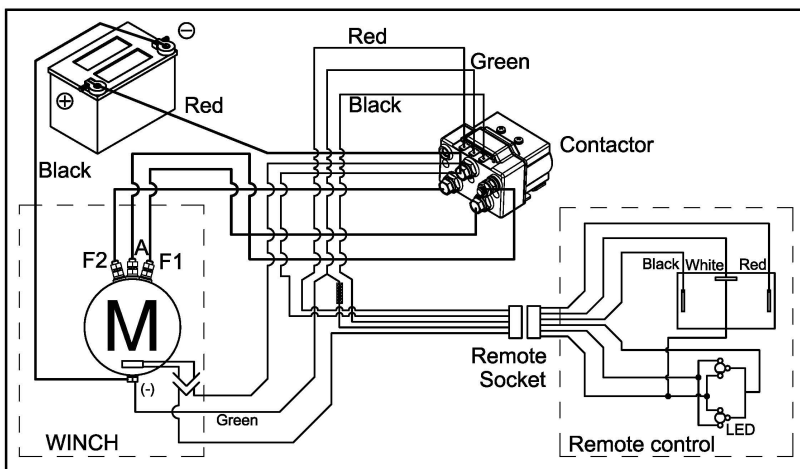
- It is important that the winch is mounted on a flat and hard surface or mounting channel to ensure the motor, drum and gearbox housing align correctly.
- Hawse fairlead does not mount to the winch directly.



- The synthetic rope shall be wound in an under-wound orientation only.
- Four (4) M10 x 1.50 pitch 8.8 grade high tensile steel bolts must be used in order to sustain the loads imposed on the winch mounting.

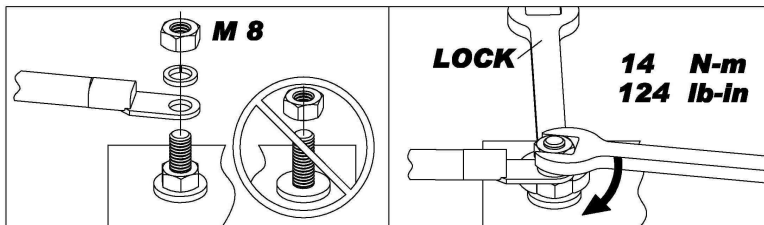
## ► Wiring Diagram

Attach the black lead firmly to the negative (–) battery terminal and red lead to the positive (+) battery terminal. Voltage drop at the winch motor must not exceed 10% of the nominal voltage of 12vdc.



## ► Correct method to tighten the motor & contactor nuts

1. Hold the lower nut on the stud and tighten the upper nut clockwise.
2. The torque setting for the nut is 124 lb-in.



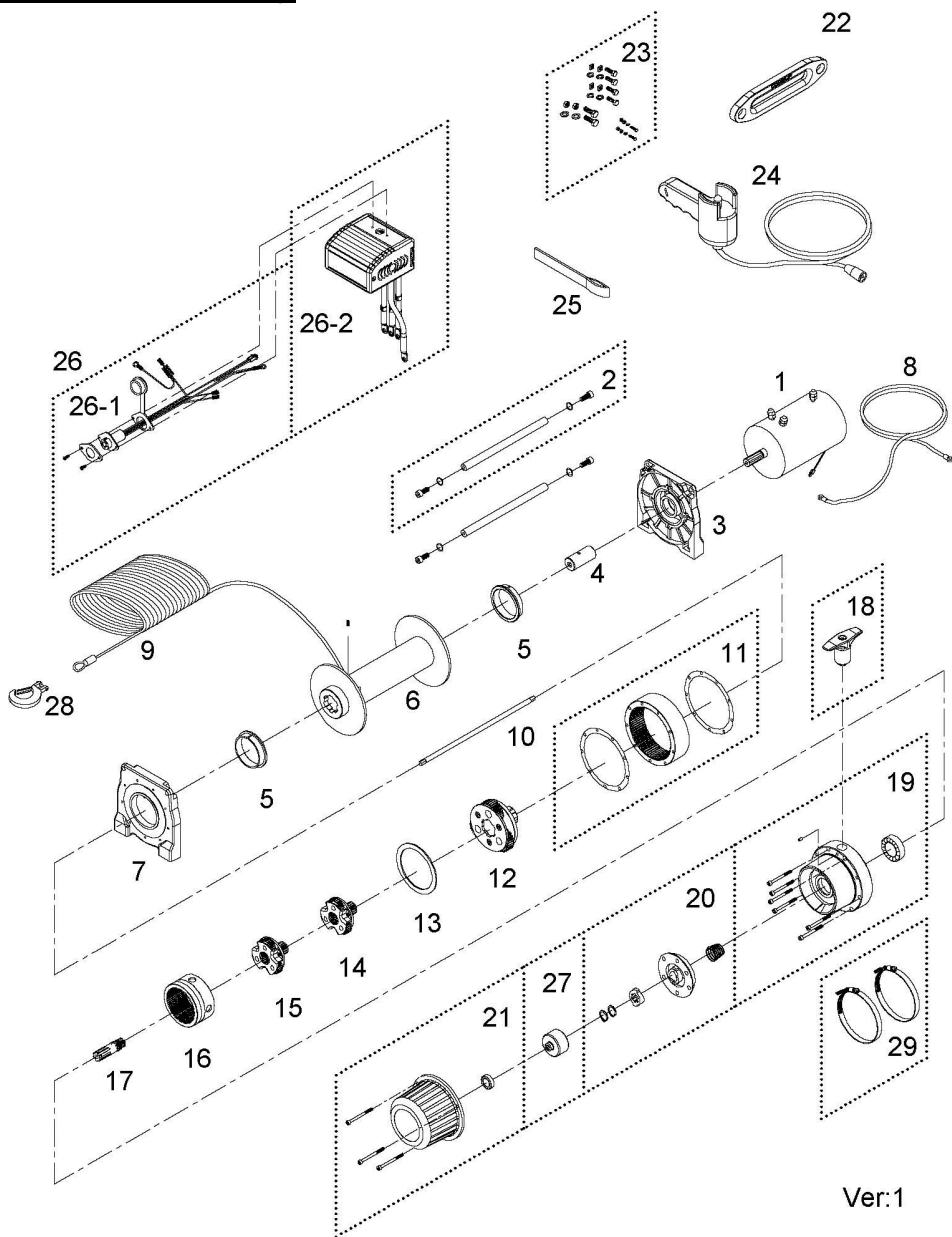
## Warning

- The winch is not to be used for transporting or lifting of personnel.
- The rated line pull shown is based on the first layer of rope on the drum.
- The rope shall remain with at least 10 wraps on the drum at all times
- The manufacturer is not responsible for damage to the synthetic rope

## **Parts List**

Item	No.	Description	Part No.	Qty
1		Motor 12V	882272	1
2		Tie bar kit	882273	2
3		Motor support rack	882274	1
4		Motor coupling	880005	1
5		Drum bushing	880006	2
6		Drum kit	882275	1
7		Gearbox support rack	882276	1
8		Grounding lead	880009	1
9		Synthetic rope	882271	1
10		1 <sup>st</sup> shaft	882277	1
11		3 <sup>rd</sup> ring gear kit	882278	1
12		3 <sup>rd</sup> stage carrier	880013	1
13		3 <sup>rd</sup> bushing	880014	1
14		2 <sup>nd</sup> stage carrier	880015	1
15		1 <sup>st</sup> stage carrier	880016	1
16		1 <sup>st</sup> & 2nd ring gear	880017	1
17		1 <sup>st</sup> pinion kit	880018	1
18		Clutch kit	881303	1
19		Gear box kit	882279	1
20		Cone brake disc kit	880021	1
21		Brake cover kit	882280	1
22		Hawse fairlead	882152	1
23		Mounting hardware	880024	1
24		Remote control	880126	1
25		Handsaver strap	880026	1
26		Control box 12V	881164	1
26-1		Remote socket kit 12V	881373	1
26-2		Control pack 12V	881400	1
27		Brake clutch base	881100	1
28		Clevis hook	882024	1
29		Clamp	882160	2

# Winch Assembly



Ver:1